

Brookfield, 10 Green Avenue, Kinmel Bay, LL18 5ET

£675,000

3 3 2

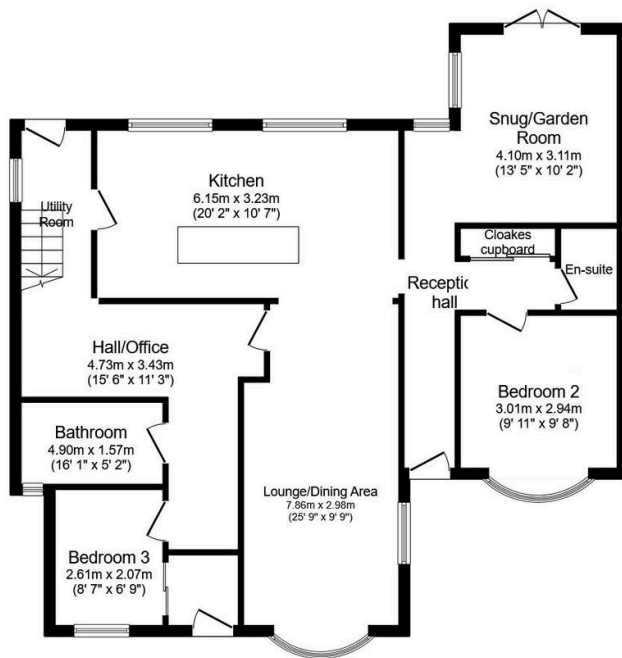


Standing in 2.5 acres including a paddock is this immaculate, detached property in a semi-rural location, featuring generous land, various outbuildings, three reception rooms, a stylish open-plan kitchen, three bedrooms including a master with en-suite, and three bathrooms, making it ideal for families, couples, and suited to equestrian purposes due its past history of housing the local donkeys that frequented our beach in the Summer Months.

PETER LARGE

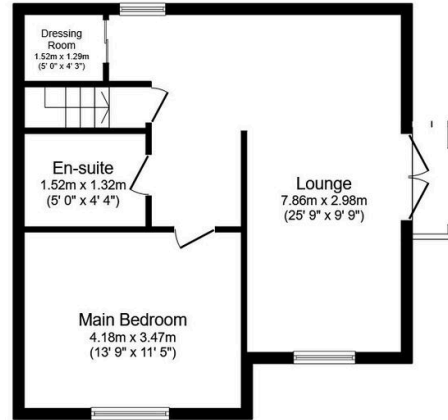
ESTATE AGENTS

- An impressive three bedroom detached dormer bungalow
- Standing in 2.5 acres
- Suited for Equestrian purposes with paddock
- Beautifully presented
- Two reception rooms
- Countryside views
- Attractive gardens
- A range of outbuildings
- EPC D
- 25/07/2024



Ground Floor

Floor area 101.5 m² (1,092 sq.ft.)



First Floor

Floor area 51.5 m² (554 sq.ft.)

TOTAL: 152.9 m² (1,646 sq.ft.)

This floor plan is for illustrative purposes only. It is not drawn to scale. Any measurements, floor areas (including any total floor area), openings and orientations are approximate. No details are guaranteed, they cannot be relied upon for any purpose and do not form any part of any agreement. No liability is taken for any error, omission or misstatement. A party must rely upon its own inspection(s). Powered by www.Propertybox.io

CONSUMER PROTECTION REGULATIONS 2008 AND THE BUSINESS PROTECTION FROM MISLEADING MARKETING REGULATIONS 2008

These particulars, whilst believed to be accurate, are set out for guidance only and do not constitute any part of an offer or contract. Prospective purchasers or tenants should not rely on these particulars as statement or representation of fact, but must satisfy themselves by inspection or otherwise as to their accuracy. No person in the employment of PETER LARGE Estate Agents has the authority to make or give any representation or warranty in relation to the property. Room sizes are approximate and all comments are of the opinion of PETER LARGE Estate agents having carried out a walk through inspection. These sales particulars are prepared under the consumer regulations 2008 and are governed by the business from misleading marketing regulations 2008.